



# HP Latex 280 Printer

Offer wider output; enjoy fast, easy productivity



## Wider applications with unrivaled versatility<sup>1</sup>

- Satisfy a broader range of customer needs with 104-inch addressable width.
- Print on a wide range of media from vinyl, textiles,<sup>2</sup> paper, film, wallpaper to low-cost uncoated options.
- Seize your share of the growing temporary textiles market—print on a wider variety of textiles.<sup>2</sup>
- See outdoor durability better than eco-solvent inks;<sup>3</sup> offer vehicle graphics with the 3M™ MCS™ Warranty.<sup>4</sup>

## Productivity made easy

- Print up to 70% faster<sup>1</sup> than the HP Latex 260 Printer, with extremely short time to delivery.
- Produce double-sided prints<sup>5</sup> with automated registration across sides that move immediately to finishing.
- Increase uptime with automatic, reliable, low-maintenance printing and remote management.
- Easily control printer settings and tasks via the intuitive touchscreen.

<sup>1</sup> The HP Latex 280 Printer produces an extremely broad range of both outdoor and indoor applications at speeds up to 70% faster than the HP Latex 260 Printer (formerly the HP Designjet L26500 Printer series) and the HP Designjet L25500 Printer series from a single device, which surpasses the number of different applications that traditional eco-solvent printers or water-based printers can produce. Internal print speed testing completed in 2011.

For more information, please visit  
[hp.com/go/Latex280](http://hp.com/go/Latex280)

Find a comprehensive list of all latex compatible media along with finished color profiles and printer settings at  
[hp.com/go/mediasolutionslocator](http://hp.com/go/mediasolutionslocator)

## Attract business from environment-minded clients

- Attract environmentally conscious customers using HP Latex Inks and recyclable HP printing materials.<sup>6</sup>
- Improve the work environment—no special ventilation,<sup>7</sup> no hazard warning labels—unlike most eco-solvent inks.
- Return and recycle supplies for free<sup>8</sup> and dramatically improve ink efficiency.<sup>9</sup>
- HP Latex Inks—UL ECOLOGO, GREENGUARD Children & Schools Certified<sup>SM</sup>,<sup>10</sup> Eco Mark-Certified ink cartridges.<sup>11</sup>

<sup>2</sup> For best results, print on media that does not let the ink trespass onto the printer. Performance may vary depending on media. Please consult your media supplier for compatibility details.

<sup>3</sup> Durability comparison based on testing of representative eco-solvent inks including eco-sol Max inks on Avery SA vinyl for display permanence and scratch, rub/abrasion, and chemical resistance. HP image permanence and scratch, smudge, and water resistance estimates by HP Image Permanence Lab on a range of media including HP printing materials.

<sup>4</sup> The 3M™ MCS™ Warranty is available to certified Graphics Manufacturers. For more information on registration and qualification requirements, refer to [3Mgraphics.com](http://3Mgraphics.com), or contact your 3M representative.

<sup>5</sup> For best results use media options intended for double-sided printing.

<sup>6</sup> HP Large Format Media take-back program availability varies. Some recyclable HP papers can be recycled through commonly available recycling programs. Recycling programs may not exist in your area. See [hp.com/recycle](http://hp.com/recycle) for details.

<sup>7</sup> Special ventilation is not required to meet U.S. OSHA requirements on occupational exposure to VOCs from HP Latex Inks. Special ventilation equipment installation is at the discretion of the customer—no specific HP recommendation is intended. Customers should consult state and local requirements and regulations.

<sup>8</sup> Visit [hp.com/recycle](http://hp.com/recycle) to see how to participate and for HP Planet Partners program availability; program may not be available in your area. Where this program is not available, consult the Material Safety Data Sheet (MSDS) available at [hp.com/go/ecodata](http://hp.com/go/ecodata) to determine appropriate disposal.

<sup>9</sup> Per internal HP testing based on the amount of ink used during the recommended ink maintenance routines comparing the HP Latex Ink printing system to certain eco-solvent ink systems.

<sup>10</sup> UL ECOLOGO Certification to UL 2801 demonstrates that an ink meets a range of stringent criteria related to human health and environmental considerations (see [ul.com/EL](http://ul.com/EL)). HP Latex Inks are GREENGUARD Children and Schools Certified<sup>SM</sup> (see [greenguard.org](http://greenguard.org)).

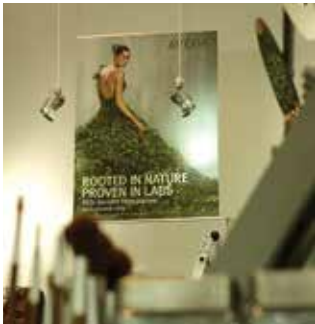
<sup>11</sup> HP 792 Latex Ink Cartridges, certification number 11 142 004, certified by the Eco Mark Office of Japan Environment Association.



## HP Latex Printing Technologies

HP Latex Inks are water-based inks that combine the best characteristics of solvent inks and water-based inks. You can obtain the outdoor durability and versatility, across all common media types used in sign and display applications, together with high quality, odorless prints,<sup>12</sup> low maintenance, and the environmental advantages of water-based inks.

Prints made with HP Latex Inks are completely cured inside the printer to form a durable image that's ready for lamination, finishing, shipment, or display.



### Point of purchase posters

Reduce costs without compromising quality

- Great results on all types of paper, including low-cost uncoated papers and traditional offset papers



### Light boxes

Deliver high-value backlit applications

- Produce high-resolution prints up to 1200 dpi
- Vibrant, saturated colors
- Choose from a range of backlit printing materials: paper, film, polypropylene, and textiles<sup>13</sup>



### Outdoor and event banners

Produce images worthy of building the best brands

- Achieve high-quality results on self-adhesive vinyls and banners
- Offer outdoor display permanence up to three years unlaminated, five years laminated<sup>14</sup>



### Vehicle wraps and graphics

Achieve fast turnarounds, even on urgent jobs

- Laminate right after printing—no need to wait for prints to dry
- Flexible ink layer conforms to complex surfaces

<sup>12</sup> Some substrates may have inherent odor.

<sup>13</sup> Performance may vary depending on media—for more information, see [hp.com/go/mediasolutionslocator](http://hp.com/go/mediasolutionslocator) or consult your media supplier for compatibility details. For best results, use textiles that do not stretch. Performance varies by printer. For mid-volume HP Latex printers, the optional ink collector is required for porous textiles (included with the HP Latex 850 Printer). For low-volume HP Latex printers, print on media that does not let the ink trespass onto the printer.

<sup>14</sup> HP image permanence estimates by HP Image Permanence Lab. Outdoor display permanence tested according to SAE J2527 on a range of media, including HP media; in a vertical display orientation in simulated nominal outdoor display conditions for select high and low climates, including exposure to direct sunlight and water; performance may vary as environmental conditions change. Laminated display permanence using HP Clear Gloss Cast Overlaminate, GBC clear gloss 1.7 mil hot laminate, or Neschen Solvoprint Performance Clear 80 laminate. Results may vary based on specific media performance.



## HP Latex 280 Printer

### Vast improvement in double-sided printing

- The double-sided capability<sup>15</sup> allows you to print double-sided banners with minimal operator intervention; the HP Optical Media Advance Sensor (OMAS) controls registration automatically
- You can also save time—no need to rewind the roll between sides

### More textiles and higher quality

- 264-cm (104-in) fully supported; now you have access to more of the fabric rolls available in the market
- Maximize the variety of media you can handle, including soft materials previously too light to load; print on porous materials with the Platen Cover accessory (B2W90A)
- Even higher image quality with the new front tension system and edge holders



### Wallcoverings and canvas

Discover a new market opportunity

- Odorless prints<sup>16</sup> meet high environmental standards—ideal for hotels, restaurants, schools
- Trial the easy-to-use HP WallArt solution, visit [hp.com/go/wallart](http://hp.com/go/wallart)<sup>17</sup>



### Temporary textiles<sup>18</sup>

Complement your business with textile signage applications

- Print on a wide variety of textiles, including uncoated and natural textiles
- An easy-to-use solution compared to dye-sublimation techniques

## Eco Highlights

- Water-based HP Latex Inks—no special ventilation required, no hazard warning labels, no HAPs<sup>1</sup>
- HP Latex Inks are UL ECOLOGO Certified; Eco Mark-Certified cartridges<sup>2</sup>
- GREENGUARD Children & Schools Certified<sup>SM</sup> HP Latex Inks; produce odorless prints<sup>3</sup>
- Reduce your impact—print using a range of recyclable HP media, recycle all printing supplies<sup>4</sup>



<sup>1</sup> Special ventilation is not required to meet U.S. OSHA requirements on occupational exposure to VOCs from HP Latex Inks. Special ventilation equipment installation is at the discretion of the customer—no specific HP recommendation is intended. Customers should consult state and local requirements and regulations. Contains no Hazardous Air Pollutants according to EPA Method 311.

<sup>2</sup> UL ECOLOGO Certification to UL 2801 demonstrates that an ink meets a range of stringent criteria related to human health and environmental considerations (see [ul.com/EL](http://ul.com/EL)). HP 792 Latex Ink Cartridges, certification number 11 142 004, certified by the Eco Mark Office of Japan Environment Association.

<sup>3</sup> See [greenguard.org](http://greenguard.org). Some substrates may have inherent odor.

<sup>4</sup> Visit [hp.com/recycle](http://hp.com/recycle) to see how to participate and for HP Planet Partners program features and availability; program may not be available in your area.

**Please recycle large-format printing hardware and printing supplies.**

**Find out how at our website**  
[hp.com/ecosolutions](http://hp.com/ecosolutions)

<sup>15</sup> For best results use media options intended for double-sided printing.

<sup>16</sup> Some substrates may have inherent odor.




<sup>17</sup> Requires an HP WallArt account, Internet connection, and connected Internet-capable device. One year free trial license. Cancel at any time. After the free trial, a full HP WallArt license may be purchased. For more information, see [hp.com/go/wallart](http://hp.com/go/wallart).

<sup>18</sup> Performance may vary depending on media—for more information, see [hp.com/go/mediasolutionslocator](http://hp.com/go/mediasolutionslocator) or consult your media supplier for compatibility details. For best results, use textiles that do not stretch. Performance varies by printer. For mid-volume HP Latex printers, the optional ink collector is required for porous textiles (included with the HP Latex 850 Printer). For low-volume HP Latex printers, print on media that does not let the ink trespass onto the printer.

## Technical specifications

<b>Print speed<sup>19</sup></b>	Up to 70 m <sup>2</sup> /hr (753 ft <sup>2</sup> /hr)		
<b>Media</b>	Handling	Roll feed, take-up reel, automatic cutter (for vinyl, paper-based media, backlit polyester film, and thin banners)	
	Roll size	58 to 264-cm (23 to 104-in) rolls, up to 100 kg (220 lb)	
	Roll diameter	Up to 25-cm (9.8-in) outside diameter	
	Thickness	Up to 0.5 mm (19.7 mil)	
<b>Printing</b>	Printing modes <sup>19</sup>	2-pass bidirectional 70 m <sup>2</sup> /hr (753 ft <sup>2</sup> /hr) 4-pass bidirectional 40 m <sup>2</sup> /hr (430 ft <sup>2</sup> /hr) 6-pass bidirectional 28 m <sup>2</sup> /hr (301 ft <sup>2</sup> /hr) 8-pass bidirectional 18.4 m <sup>2</sup> /hr (198 ft <sup>2</sup> /hr) 10-pass bidirectional 14.7 m <sup>2</sup> /hr (158 ft <sup>2</sup> /hr) 12-pass bidirectional 12.3 m <sup>2</sup> /hr (132 ft <sup>2</sup> /hr) 16-pass bidirectional 9.2 m <sup>2</sup> /hr (99 ft <sup>2</sup> /hr)	
	Print resolution	1200 x 1200 dpi	
	Margins	Top x bottom x left x right: 5 x 5 x 5 x 5 mm (0.2 x 0.2 x 0.2 x 0.2 in)	
	Printheads	6 (2 x yellow/black, 2 x cyan/light cyan, 2 x light magenta/magenta)	
	<b>Connectivity</b>	Interfaces (standard) Gigabit Ethernet (1000Base-T)	
	<b>Dimensions (w x d x h)</b>	Printer: 3581 x 730 x 1377 mm (141 x 29 x 54 in) Shipping: 3850 x 1100 x 1675 mm (151.6 x 43.3 x 65.9 in)	
<b>Weight</b>	Printer: 380 kg (837 lb), Shipping: 629 kg (1387 lb)		
<b>What's in the box</b>	HP Latex 280 Printer, printheads, printhead cleaning kit, ink maintenance kit, cleaning container, printer stand, take-up reel, 61-in loading accessory, 104-in loading accessory, edge holder, 3-phase voltage kit, waste management diverter, user maintenance kit, quick reference guide, documentation software		
<b>Environmental ranges</b>	Operating temperature: 15 to 30°C (59 to 86°F), Storage temperature: -25 to 55°C (-13 to 131°F) Operating humidity: 30 to 80% RH (non-condensing)		
<b>Acoustic</b>	Sound pressure: 61 dB(A) (active); 45 dB(A) (standby) Sound power: 8 B(A) (active); 6.7 B(A) (standby)		
<b>Power consumption</b>	4.2 kW (printing); 8 to 10 kW (maximum); < 64 watts (powersave)		
	Power requirements	Input voltage: 3-phase, 200 to 240 VAC (+/- 10%), 40 A or 380 to 415 VAC (-10% +6%), 24 A; 50/60 Hz (+/- 3 Hz)	
<b>Certification</b>	Safety	USA and Canada (CSA certified), EU (LVD and EN 60950-1 compliant), Russia (GOST), China (CCC)	
	Electromagnetic	Compliant with Class A requirements, including: USA (FCC rules), Canada (ICES), EU (EMC Directive), Australia (ACMA), New Zealand (RSM), China (CCC), Japan (VCCI), Korea (KCC)	
	Environmental	WEEE, EU RoHS, China RoHS, REACH, EuP, FEMP, UL	
<b>Warranty</b>	One-year limited hardware warranty; 8-hour, 5 days a week phone support		

## Ordering information

<b>Product</b>	CQ871A	HP Latex 280 104-in Printer
<b>Accessories</b>	CZ277A	HP Designjet L28500 (104-in Printer) 3-in Spindle
	CZ278A	HP Designjet 104-in Media Loading Accessory
	CR765A	HP Designjet 61-in Media Loading Accessory
	CQ201A	HP Designjet L2x500 User Maintenance Kit
	B2W90A	HP Designjet L26500/28500 Platen Cover
	B8K59A	HP Designjet L26500/L28500 Edge Holder
<b>Original HP printheads</b>	CN702A	HP 792 Yellow/Black Latex Printhead
	CN703A	HP 792 Cyan/Light Cyan Latex Printhead
	CN704A	HP 792 Light Magenta/Magenta Latex Printhead
<b>Original HP ink cartridges</b>	CN705A	HP 792 775-ml Black Latex Ink Cartridge
	CN706A	HP 792 775-ml Cyan Latex Ink Cartridge
	CN707A	HP 792 775-ml Magenta Latex Ink Cartridge
	CN708A	HP 792 775-ml Yellow Latex Ink Cartridge
	CN709A	HP 792 775-ml Light Cyan Latex Ink Cartridge
	CN710A	HP 792 775-ml Light Magenta Latex Ink Cartridge
<b>Original HP maintenance supplies</b>	CR278A	HP 792 Latex Printhead Cleaning Kit
	CR279A	HP 792 Latex Ink Maintenance Kit
	CH622A	HP 789/792 Latex Printhead Cleaning Container
<b>Original HP large format printing materials</b>	HP printing materials are designed together with HP Latex Inks and HP Latex printers to provide optimal image quality, consistency, and reliability.	
	HP PVC-free Wall Paper (FSC® and GREENGUARD Children & Schools <sup>SM</sup> Certified) <sup>20</sup>	
	HP HDPE Reinforced Banner  <sup>21</sup>	
	HP Light Textile Display Banner  <sup>21</sup>	
HP Everyday Matte Polypropylene, 3-in Core  <sup>21</sup>		
For the entire HP Large Format Printing Materials portfolio, please see <a href="http://globalBMG.com/hp/signagemedia">globalBMG.com/hp/signagemedia</a> .		
<b>Service and support</b>	U0L97E	HP 3 year Next business day Designjet L28500 104-in Hardware Support
	U0L98E	HP 3 year 4 hour 13x5 Designjet L28500 104-in Hardware Support
	U0M13PE	HP 1 year Post warranty Next business day Designjet L28500 104-in Hardware Support

<sup>19</sup> Speed based on printing using full width 264 cm/104 in.

<sup>20</sup> FSC® trademark license code FSC®-C017543, see [fsc.org](http://fsc.org). Not all FSC®-certified products are available in all regions. HP PVC-free Wall Paper printed with HP Latex Inks is GREENGUARD Children & Schools Certified<sup>SM</sup>. See [greenguard.org](http://greenguard.org).

<sup>21</sup> HP Large Format Media take-back program availability varies. Recycling programs may not exist in your area. See [hp.com/recycle](http://hp.com/recycle) for details.

For HP Certified third-party RIP solutions, please visit us online at:  
[hp.com/go/Latex280/solutions](http://hp.com/go/Latex280/solutions)

See Site Preparation guide requirements to ensure complete compliance with all installation and operation requirements, safety procedures, warnings, cautions, and local regulations. Download this and other manuals from [hp.com/go/Latex280/manuals](http://hp.com/go/Latex280/manuals)



HP Latex 280 Printer (formerly the HP Designjet L28500 Printer series)

